



Joey Micro

Manual v1.1.2

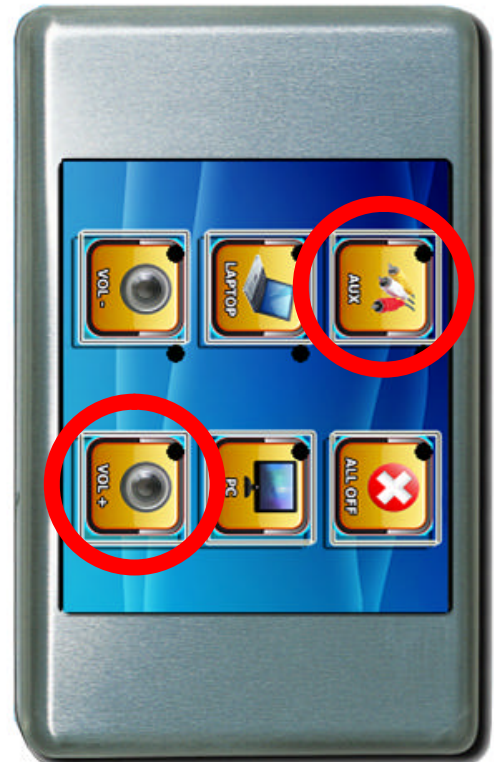
This manual covers the following:

- Pre-programmed functionality
- User programming
- Installation guide

PRE- PROGRAMMED FUNCTIONALITY

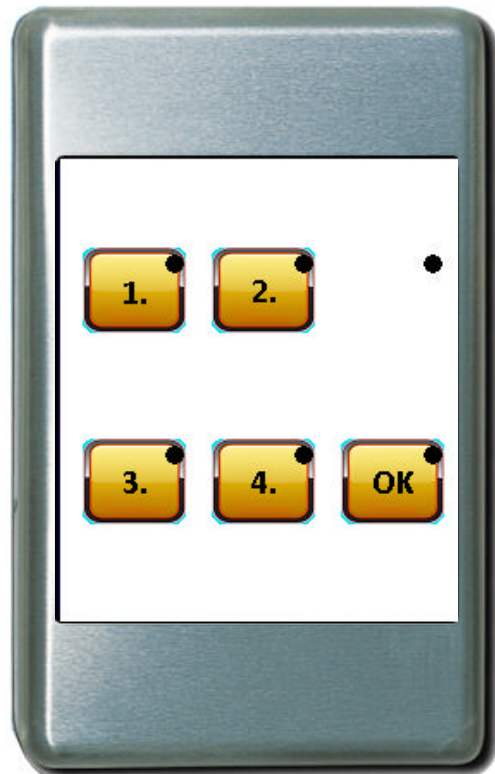
- *Entering 'preset mode' on the Joey Micro6*

1. Remove power from the Joey Micro.
2. Hold down the two buttons shown in the diagram.
3. Apply power to the Joey Micro while continuing to hold the two buttons.
4. Keep holding the two buttons for six seconds.
5. Once preset mode has been entered use the number keys 1, 2, 3 and 4 to enter the desired 4-digit preset code as shown on the following page.
6. Once you have entered 4 digits, the pattern of LEDs will change. The LED pattern should match the pattern shown on the following page. This is to verify that the correct preset has been selected.
7. If the selection is correct, press the OK button. The Joey Micro will beep afterward it will restart with the new configuration installed.



- Code indicator description

1111 o - - Dell
- - -
1112 - o - Epson
- - -
1113 o o - Hitachi
- - -
1114 - - o Mitsubishi
- - -
1121 o - o Nec 19200 baud
- - -
1122 - o o Nec 38400 baud
- - -
1123 o o o Optoma
- - -
1124 - - - Sanyo
o - -
1131 o - - Sharp
o - -
1132 - o - Panasonic
o - -
1133 o o - benq1:
o - -



USER PROGRAMMING

Joey Micro and Joey Lite are complete control packages. Both are capable of Infra Red and RS232 control including macros and are 100% customisable, both graphically and functionally.

There are three steps to programming a Joey Micro or Lite:


1. Compile graphics
2. Add functionality
3. Print and download

To keep this manual as simple as possible, we will take a commonly used scenario – a projector controller using a Joey Micro – and show how to build it step-by-step.

The Joey Micro will need to:

- Control Projector power and source selection between PC, DVD and VCR.
- Control audio volume, on either the projector or an AV receiver.

Step 1 - Assembling the graphics:

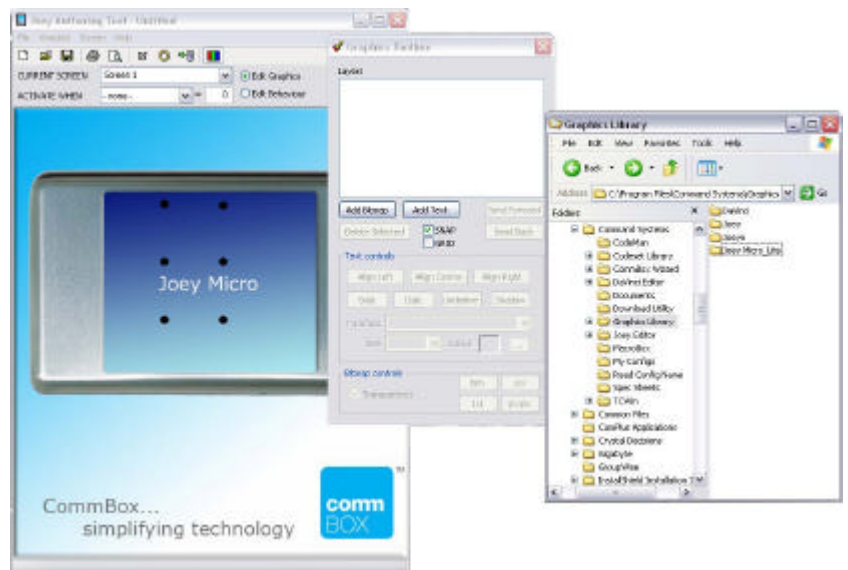
- 1) Open the Joey program and choose the device type.
- 2) Open an Explorer window (right click 'Start'  and click 'Explore')

Navigate to your graphics library:

C:/Program Files/Command Systems/Graphics Library/Joey Micro_Lite

You should now have the Joey program and an Explorer window open together.

- 3) Navigate to landscape backgrounds. Choose a suitable background and drag it onto the Joey screen.



- 4) Navigate to the button library. Drag in the desired buttons. It is possible to make multiple selections by using the Ctrl key.
- 5) Buttons will snap into place if the 'Snap' feature has been activated.
- 6) Once in place, highlight each buttons and click 'Btn'. This will automatically scale the button to the correct size.
- 7) If you want your printed image to contain LED indicator circles, go into 'Edit behaviour' mode, double click the desired button and select 'Print Circles'.

Step 2 - Adding functionality:

You will need to be in 'Edit behaviour' mode to add functionality.

In steps 1 to 7 we will assign indicator LEDs to screens so as to indicate the projector's current operating mode.

In the steps that follow we will assign the actual control codes.

- 1) Rename the 1st screen to 'Main' (or whatever you feel is a suitable name for a first screen).
- 2) Double click the "PC" button. Click on 'Go to screen'.
- 3) Drop down box and select 'Create new screen'. Rename new screen "PC".
- 4) Click 'OK'.
- 5) Now click the PC button once. Note that the screen is now on PC. While on this screen, double click the PC button and change the LED state to 'ON'.
- 6) Double click the System Off button. Click 'Go to screen'. Select 'Main'.
- 7) Repeat above steps to create the DVD and VCR screens.



current

To test your work, click on each button on the screen to verify that the indicator LEDs work the way they should. Do not forget to add links from all buttons to all screens, as in (2) and (6) above... so that all logical operations are possible and your user cannot get "stuck" in a screen or mode with no way out.

The next step is to add the control codes to each screen. For this example, we want to be able to change projector modes and control volume from any screen but only send a projector Power Off from the main screen.

When adding codes to buttons, you simply need to add the codes for the buttons you would need to press on the original remote controls to perform the necessary action. For example, when your user presses the "VCR" button, the following codes should be sent:

Power On to the projector (do not use a Toggle Power command)

Power On to the VCR (if available)

Power On to the AV Receiver (if available)

Select VCR input on AV receiver (if used)

Select Video input on the projector

8) To add IR and RS232 codes and macros, double click the desired button, click 'Add', drop down the box and select 'Load New Codeset'.

9) Navigate to desired codeset(s) and add codes and waits as required.

Step 3 - Print and Download:

1) Click 'File, Print Setup' and select desired printer, paper size and layout.

2) Click Print. You may wish to preview prior to printing.

3) Note that more than one copy can be printed per page, simply select "many per page" under print settings.

4) Ensure that you have saved your work!

5) Plug programming cable into PC and Click 'Handset, Download' or click the shortcut download icon. (The Joey Micro must be powered to download.)

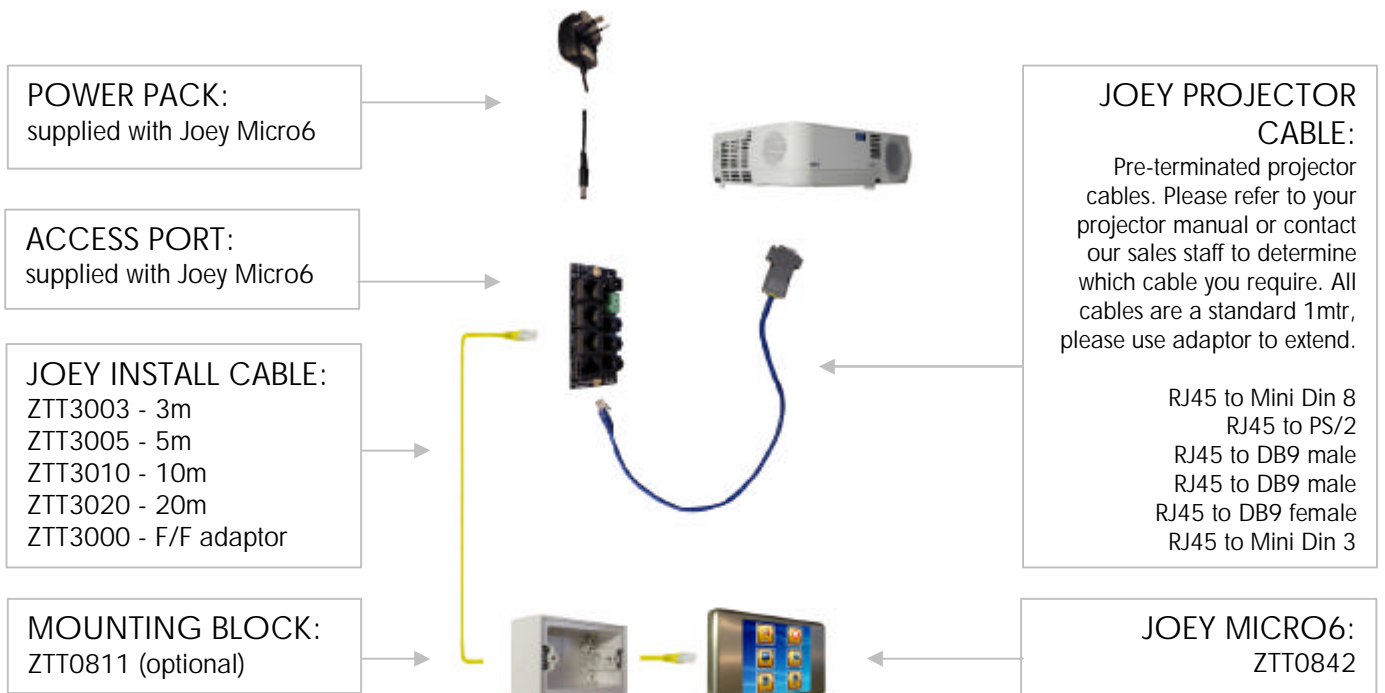
6) Click download to begin.

These instructions are intended to be as simple as possible. They do not cover the many advanced features in the Joey software such as codeset find and replace, scale to screen etc., nor the advanced device control strategies you may occasionally need when controlling projectors. You can consult the Joey Programming manual for more information.

A comprehensive training course can be provided by Command Systems either online or onsite. Please contact Simon Peters if required. s.peters@commandsystems.com.au

INSTALLATION GUIDE

- 1 - Program Joey Micro6 to suit your projector
- 2 - Mount Joey Micro6 on the wall
- 3 - Connect Joey install cable to the back of Joey Micro6
- 4 - Connect the other end of the Joey install cable to the right-angled slot on the access port
- 5 - Mount/fix access port, preferably near to the projector
- 6 - Connect the Joey projector cable in to the slot marked 'RS232 port 1' on the access port
- 7 - Connect the power pack



If you have any further enquires please do not hesitate to contact us at Command Systems.